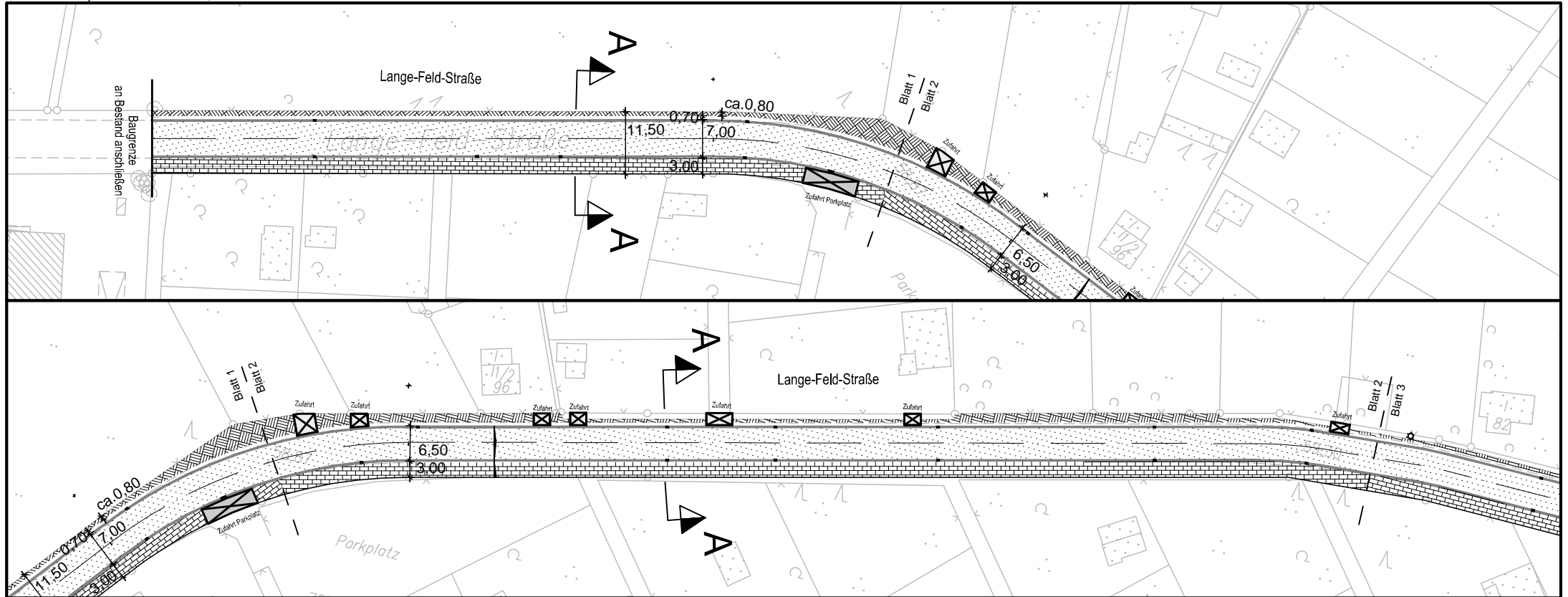
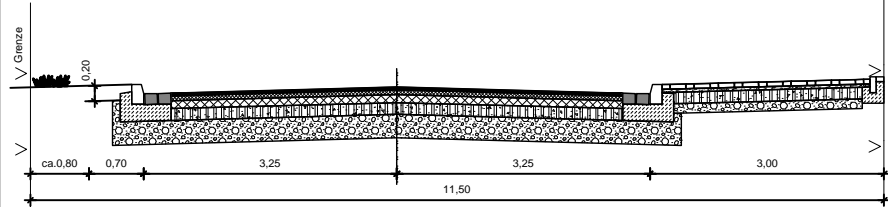


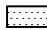
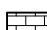





Basisdaten: Stadtkarte 1:1000  
 © Landeshauptstadt Hannover - Geoinformation



**Schnitt A-A**  
 Lange-Feld-Straße  
 ohne Maßstab



**Legende**

-  Fahrbahn Asphalt
-  Geh- und Radweg  
Betonsteinpflaster, hellgrau
-  Überfahrt Pkw-Verkehr Parkplatz  
Betonsteinpflaster, hellgrau
-  Zufahrt Pkw-Verkehr  
Betonsteinpflaster, hellgrau
-  Gosse, 2-reihig
-  Rasenstreifen, Oberboden, Rasensaat
-  vorhandene Leuchten

Beschlussdrucksache  
 Lange-Feld-Straße  
 von FRW 3 bis DB-Brücke

**FACHBEREICH TIEFBAU**  
 Straßenplanung  
 66.21  
 Oktober 2020  
 Änderungen vorbehalten !  
 M 1:1000

Anlage 1 zur  
 Drucksache Nr. / 2020