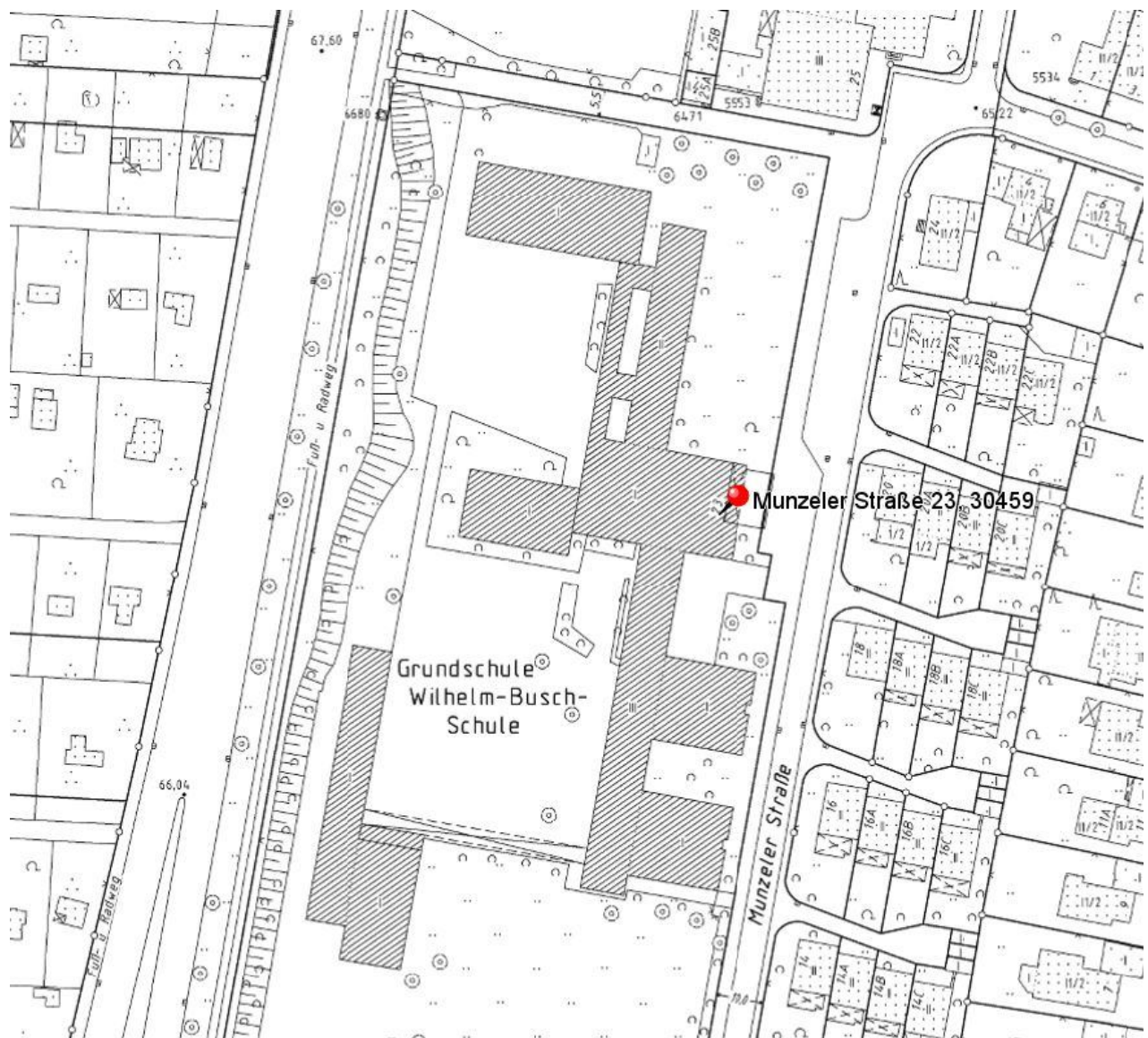


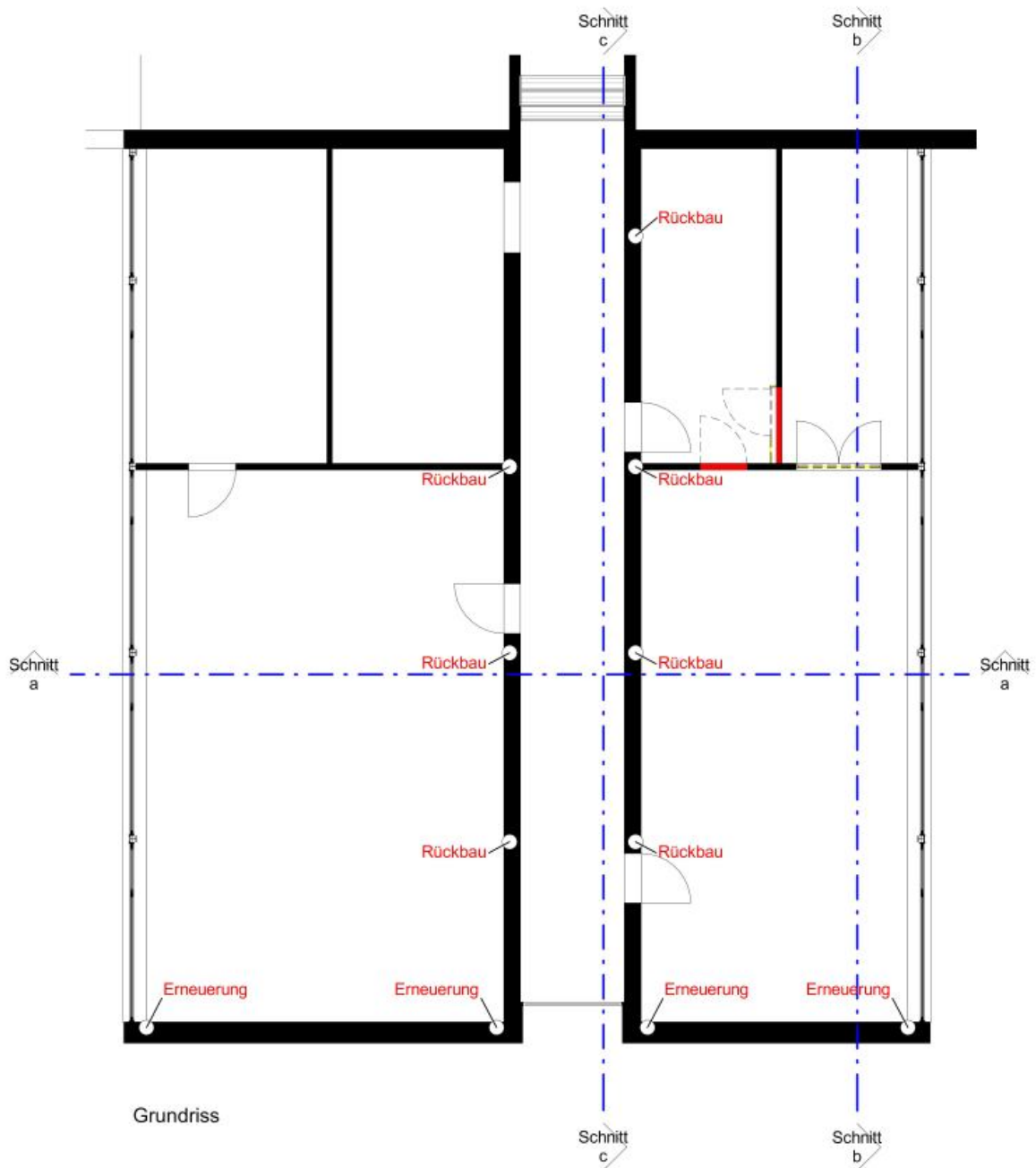
OBJEKT	GS Wilhelm-Busch-Schule	Anlage 3.1
PROJEKT	Sanierung des Fachunterrichtstrakts	
PROJEKTNR.:	K.1917.02242	

Lageplan



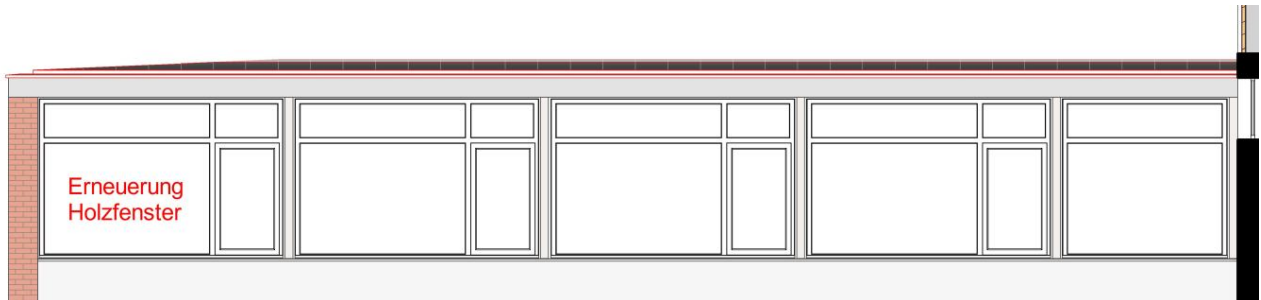
OBJEKT	GS Wilhelm-Busch-Schule	Anlage 3.2
PROJEKT	Sanierung des Fachunterrichtstrakts	
PROJEKTNR.:	K.1917.02242	

Grundriss

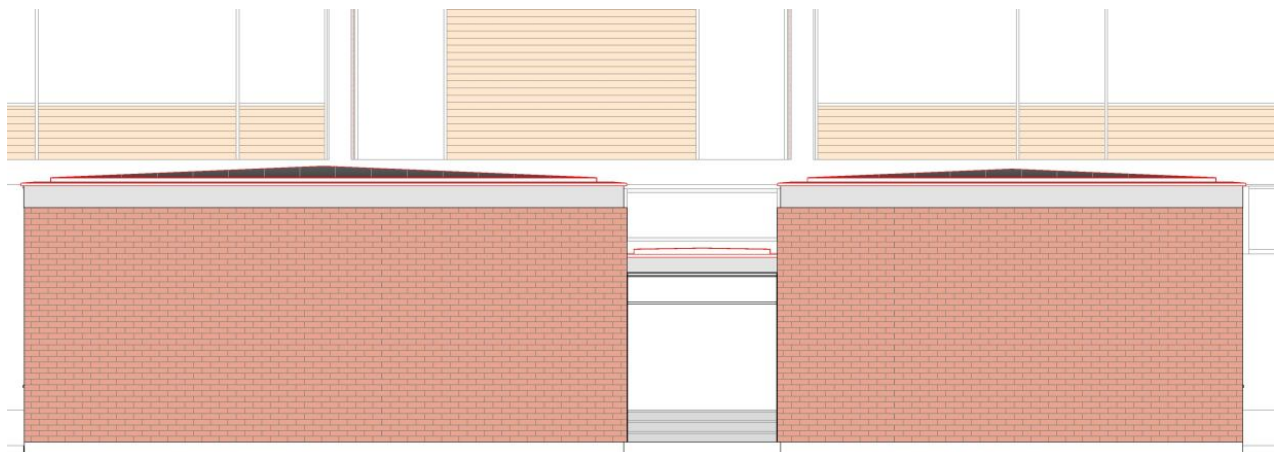


OBJEKT	GS Wilhelm-Busch-Schule	Anlage 3.3
PROJEKT	Sanierung des Fachunterrichtstrakts	
PROJEKTNR.:	K.1917.02242	

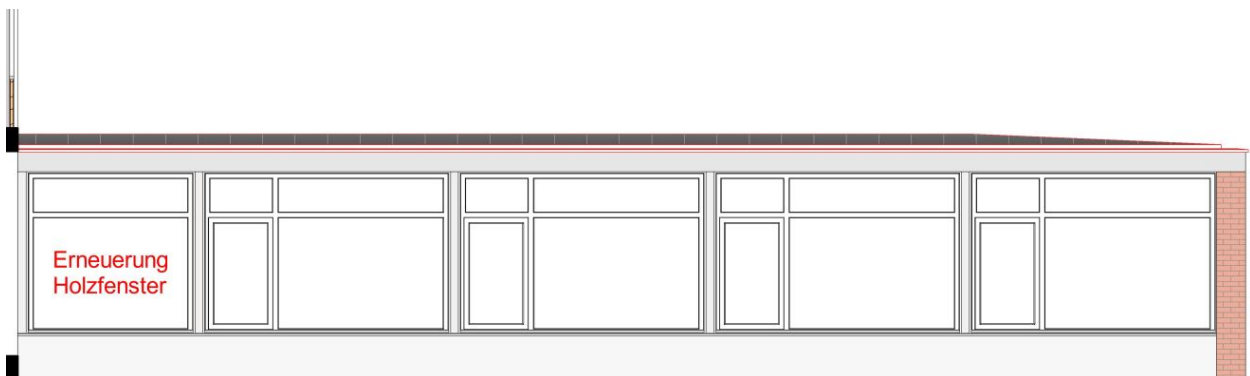
Ansicht Nord



Ansicht Ost

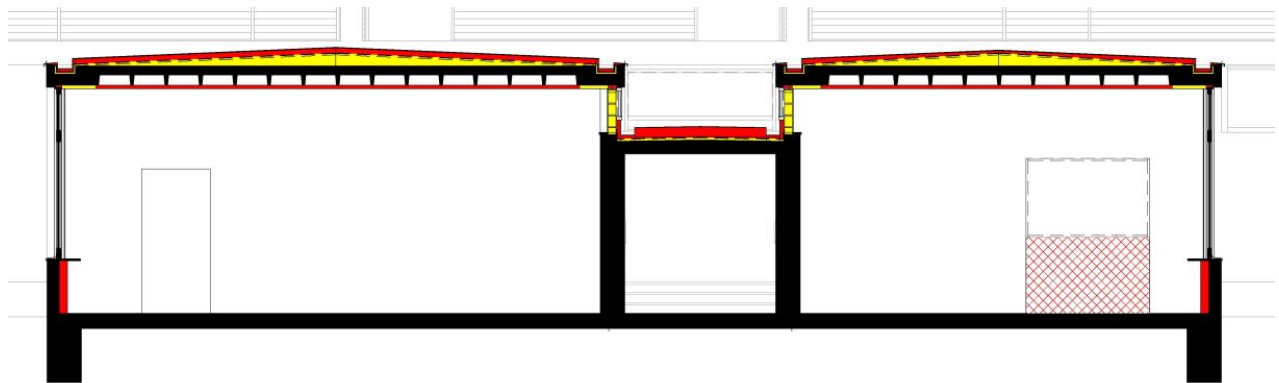


Ansicht Süd

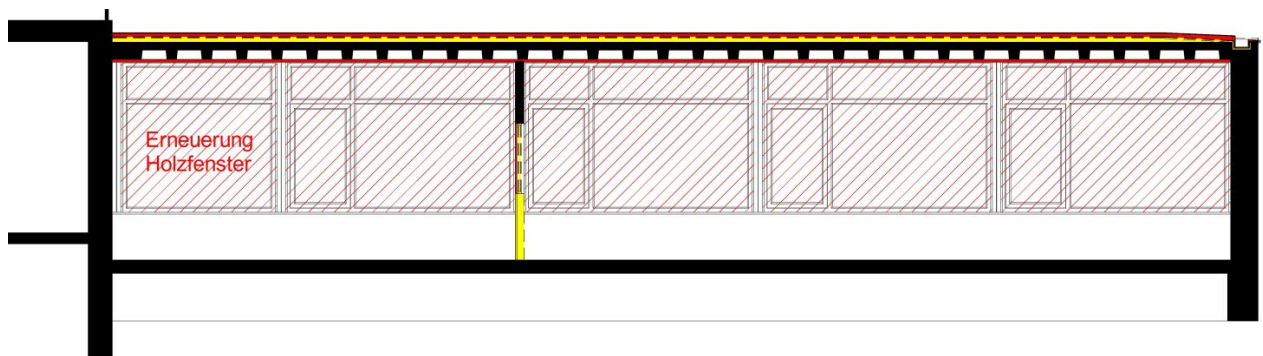


OBJEKT	GS Wilhelm-Busch-Schule	Anlage 3.4
PROJEKT	Sanierung des Fachunterrichtstrakts	
PROJEKTNR.:	K.1917.02242	

Schnitt a



Schnitt b



Schnitt c

