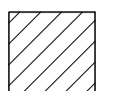
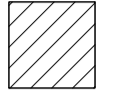


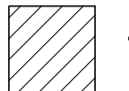


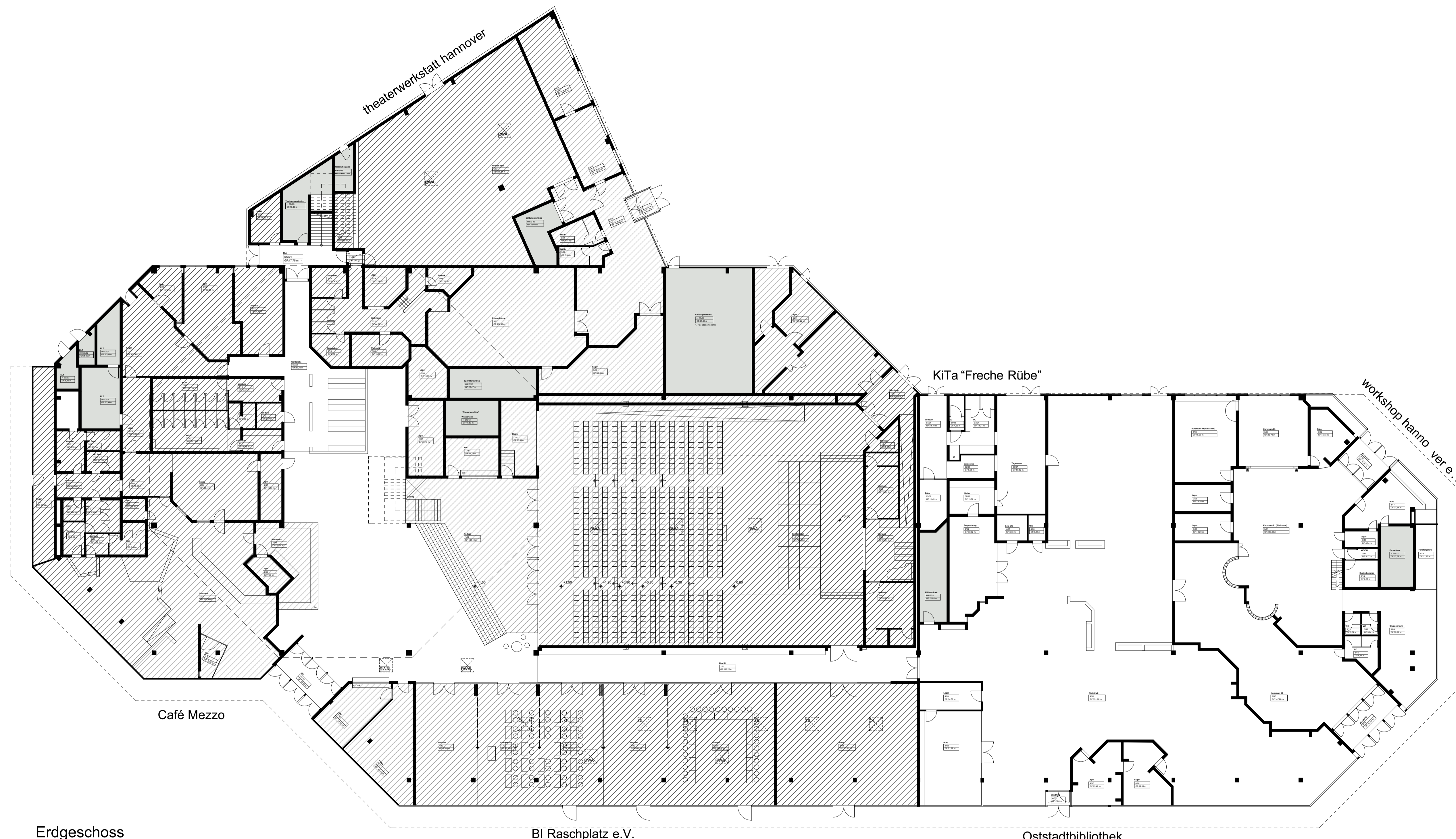
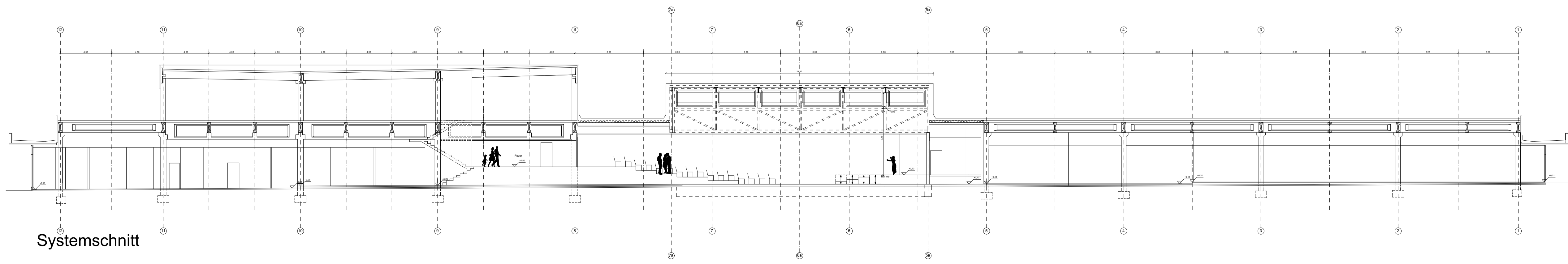


Legende:

-  BI Raschplatz e.V.
-  Café Mezzo
-  workshop hannover e.V.
-  Oststadtbibliothek
-  theaterwerkstatt hannover
-  Volkshochschule
-  KiTa "Freche Rübe"



Anlage 1b zum Mietvertrag



Raschplatzpavillon
 Machbarkeitsstudie 2009
 - Raumprogramm nach 1.BA

Auftraggeber:
 Landeshauptstadt Hannover

Entwurf:
 MOSAIK Architekten BDA

Plan: Vorentwurf

Datum: 02.10.2009