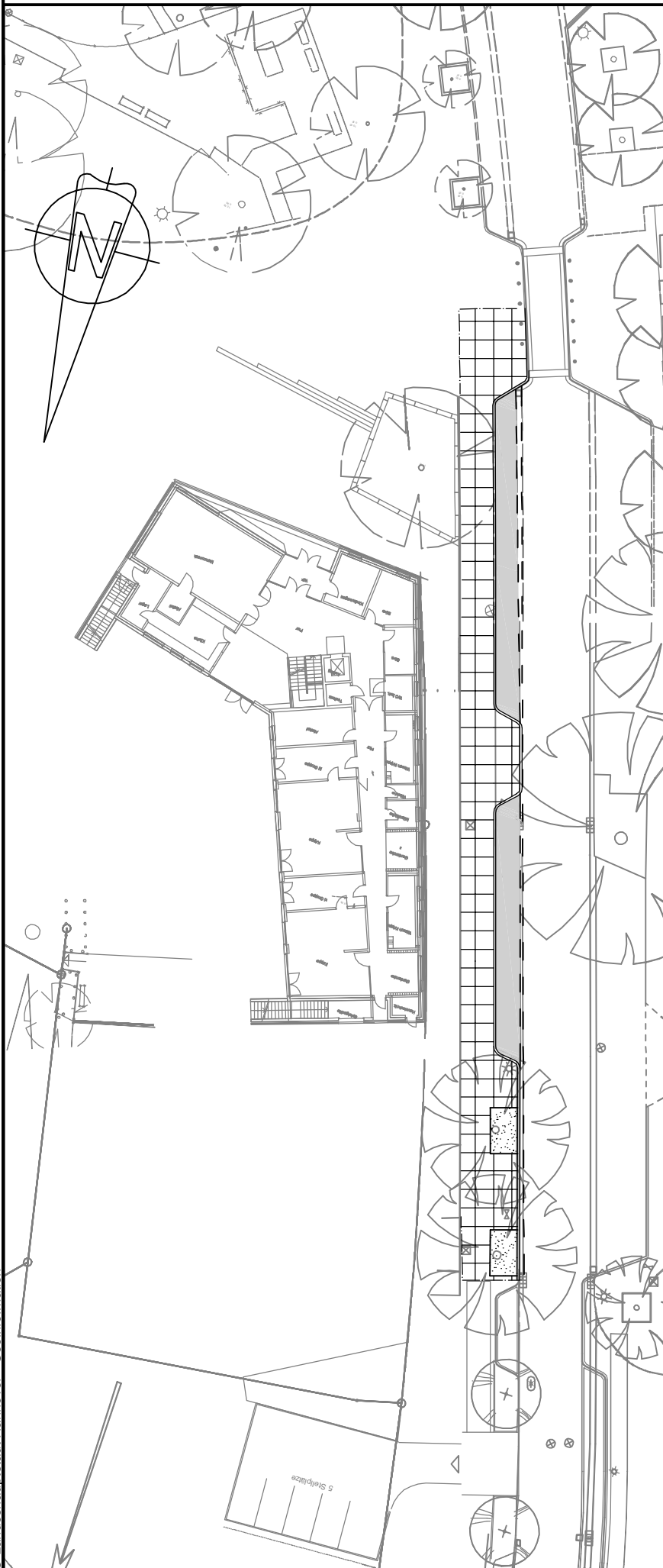

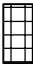



Basisdaten: Stadtkarte 1:1000
© Landeshauptstadt Hannover - Geoinformation



Legende

-  Parken: Betonsteinpflaster 20/10/8 cm , anthrazit
-  Gehwege : Betonplatten 40/40/6cm
-  Baum vorh. mit Baumscheibe

FACHBEREICH TIEFBAU
Straßenplanung
66.21

Januar 2013

Änderungen vorbehalten !