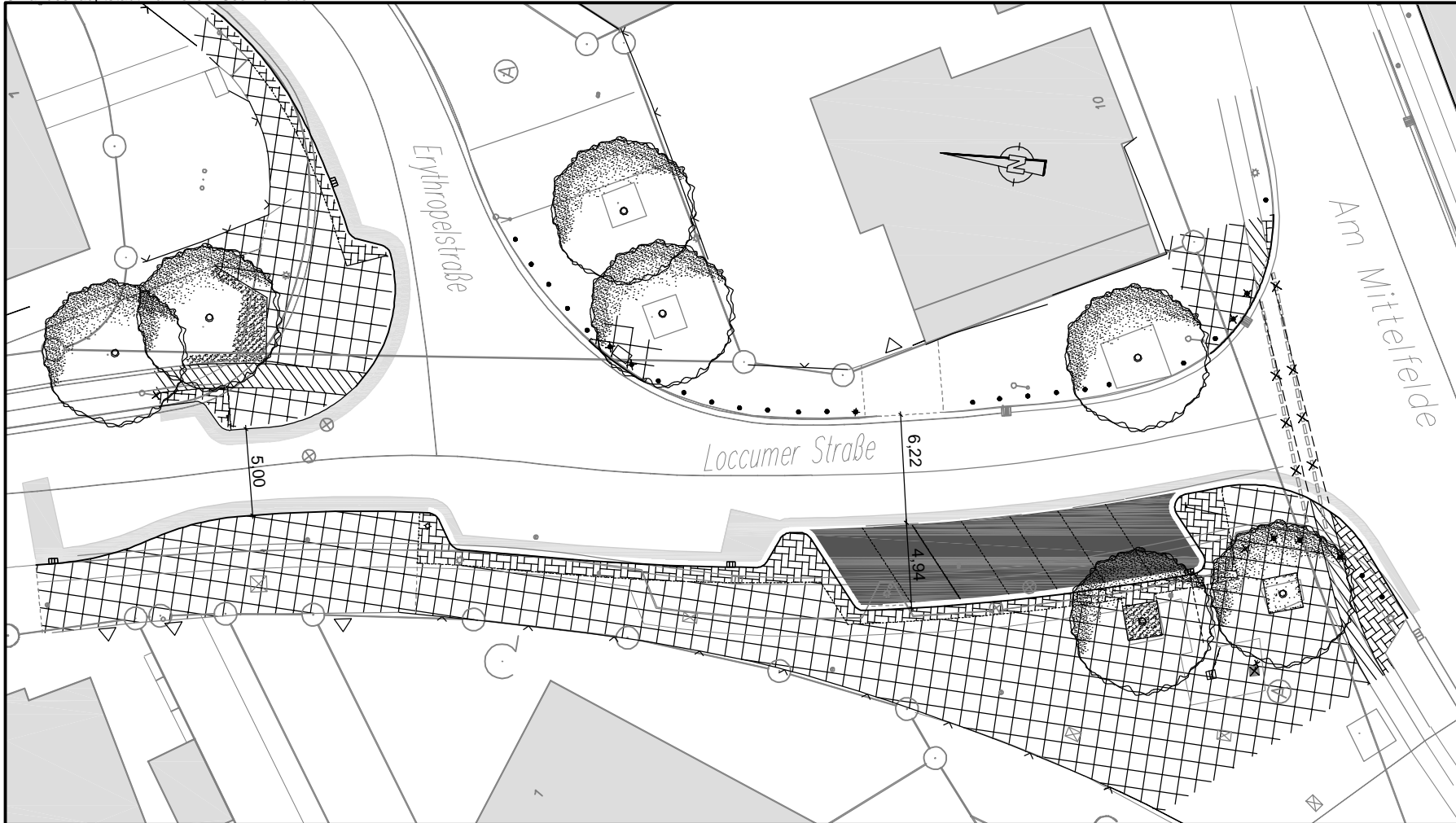


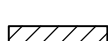
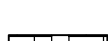

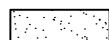
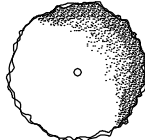


Basisdaten: Stadtkarte 1:1000
© Landeshauptstadt Hannover - Geoinformation



Legende

-  Fahrbahn
Gussasphalt
-  Gehweg
Platten 40/40/6, hellgrau
-  Radweg
SF-Verbundsteinpflaster 6cm, hellgrau
-  Sicherheitsstreifen
RE-Pflaster 20/10/6, mit Fase, hellgrau

-  Parkstreifen
RE-Pflaster 20/10/8,
mit Fase, anthrazit
-  Grünfläche
-  vorh. Baum

FACHBEREICH TIEFBAU
Straßenplanung
66.21.10
August 2012
Änderungen vorbehalten !

Anlage 3 zur
Drucksache Nr.

/ 2012